



Stellat'en Hotel

www.stellatenhotel.ca

Services & Amenities

Proposed 50-room, full-service mid-tier property along Hwy 16.

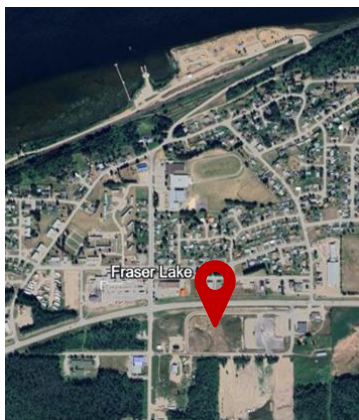
Full-service restaurant and lounge, banquet and meeting space, and a fitness centre

Project Timeline

Estimated 15-month construction period. Opening Spring/Summer 2028.

Property

Anchor tenant in a development-ready site within the Village of Fraser Lake. Convenient highway frontage.



Exclusive Industry Partnerships Welcome

The Project represents a significant undertaking and **strategic investment** for Atsiyan Services LP and the Stellat'en First Nation. The intention is that it will support long-term economic development and create a **new commercial hub** within Fraser Lake.

The region is experiencing consistent commercial and leisure traffic, as well as sustained project-related activity tied to infrastructure, energy, and mining. While large construction crews are often housed in camps, **professional staff, consultants, supervisors, and visiting executives routinely require hotel accommodation.**

The hotel's location and design position it well to capture this demand, particularly through **preferred and guaranteed accommodation arrangements** with organizations operating in or alongside Stellat'en territory.

